

ORGANIGRAMME PROTOSS

LEGENDE

BATIMENTS

ART	archives des templiers
ASM	assimilateur
BAT	batterie bouclier
BFL	balise de la flotte
BSR	baie de soutien robotique
CIT	citadelle d'Adun
CPH	canon à photon
FOR	forge
NCY	noyau cybernétique
NEX	nexus
OBE	observatoire
POR	portail
PSP	porte spatiale
PYL	pylône
TAR	tribunal d'arbitre
URO	usine robotique

UNITES

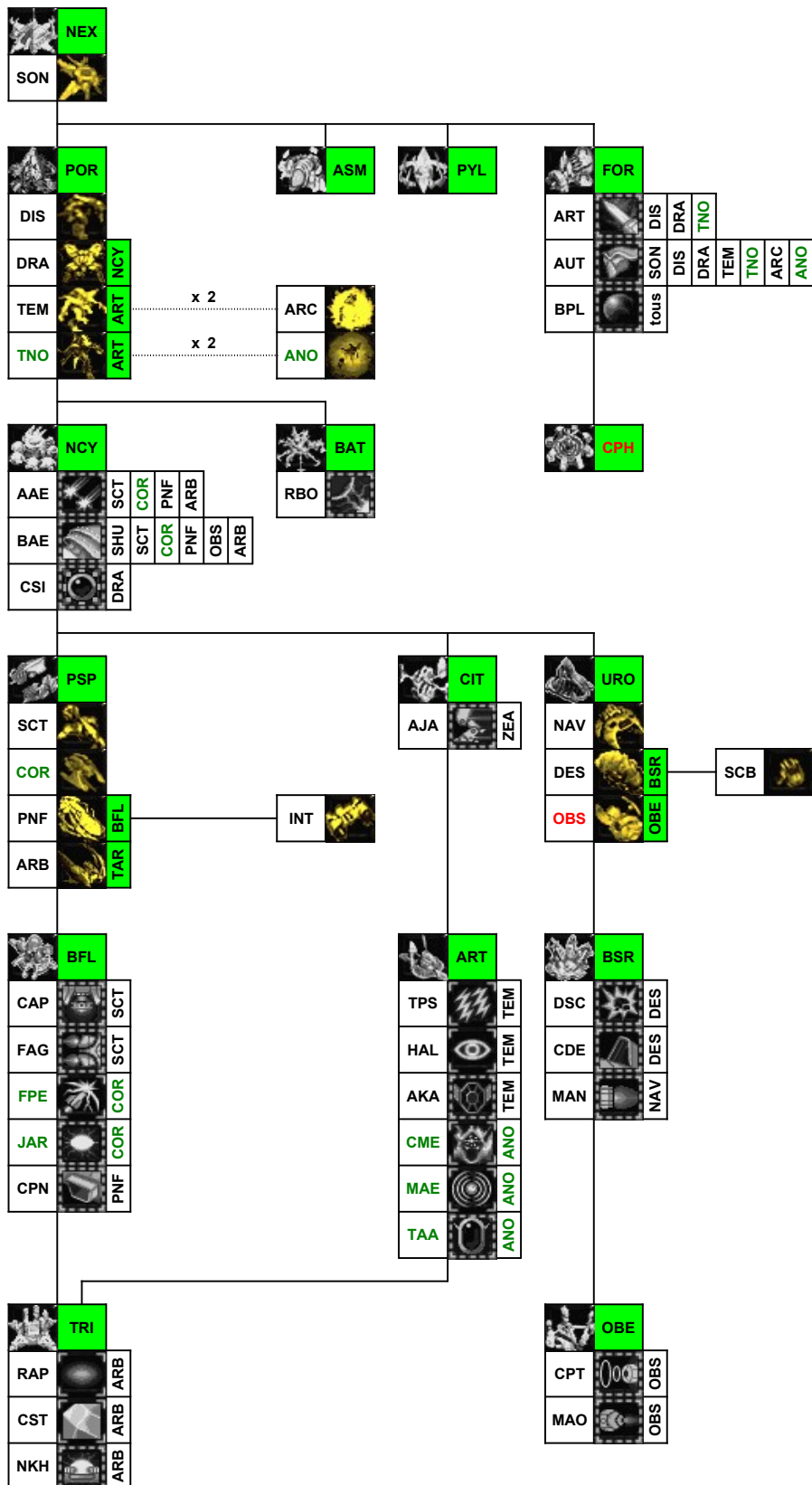
ANO	archon noir
ARB	arbitre
ARC	archon
COR	corsaire
DES	destructeur
DIS	disciple
DRA	dragon
INT	intercepteur
NAV	navette
OBS	observateur
PNF	porte-nefs
SCB	scarabée
SCT	scout
SON	sonde
TEM	templier
TNO	templier noir

ACTIONS & RECHERCHES

AAE	armement aérien
AJA	amélioration jambes
AKA	amulette khaydarin
ATE	armement terrestre
AUT	armure terrestre
BAE	blindage aérien
BPL	boucliers plasma
CAP	capteurs apial
CDE	capacité destructeur
CME	contrôle mental
CPN	capacité porte-nefs
CPT	capteurs
CSI	charge de singularité
CST	champ de stase
DSC	dégâts scarabées
FAG	fusées anti-gravité
FPE	filet de perturbations
HAL	hallucination
JAR	joyau argus
MAE	maelström
MAN	moteur antigrav (NAV)
MAO	moteur antigrav (OBS)
NKH	noyau khaydarin
RAP	rappel
RBO	recharger boucliers
TAA	talisman argus
TPS	tempête psionique

DIVERS

—	permet le bâtiment suivant
.....	mutation
XXXX	détecteur d'ennemi camouflé
XXX	seulement dans Brood War



TERRAN TECH TREE

KEY

BUILDINGS

ACA	academy
ARM	armory
BAR	barracks
BUN	bunker
COM	command center
COP	covert ops
CST	comsat station
CTO	control tower
ENG	engineering bay
FAC	factory
MSH	machine shop
MTU	missile turret
NSI	nuclear silo
PHL	physics lab
REF	refinery
SFA	science facility
STP	starport
SUP	supply depot

UNITS

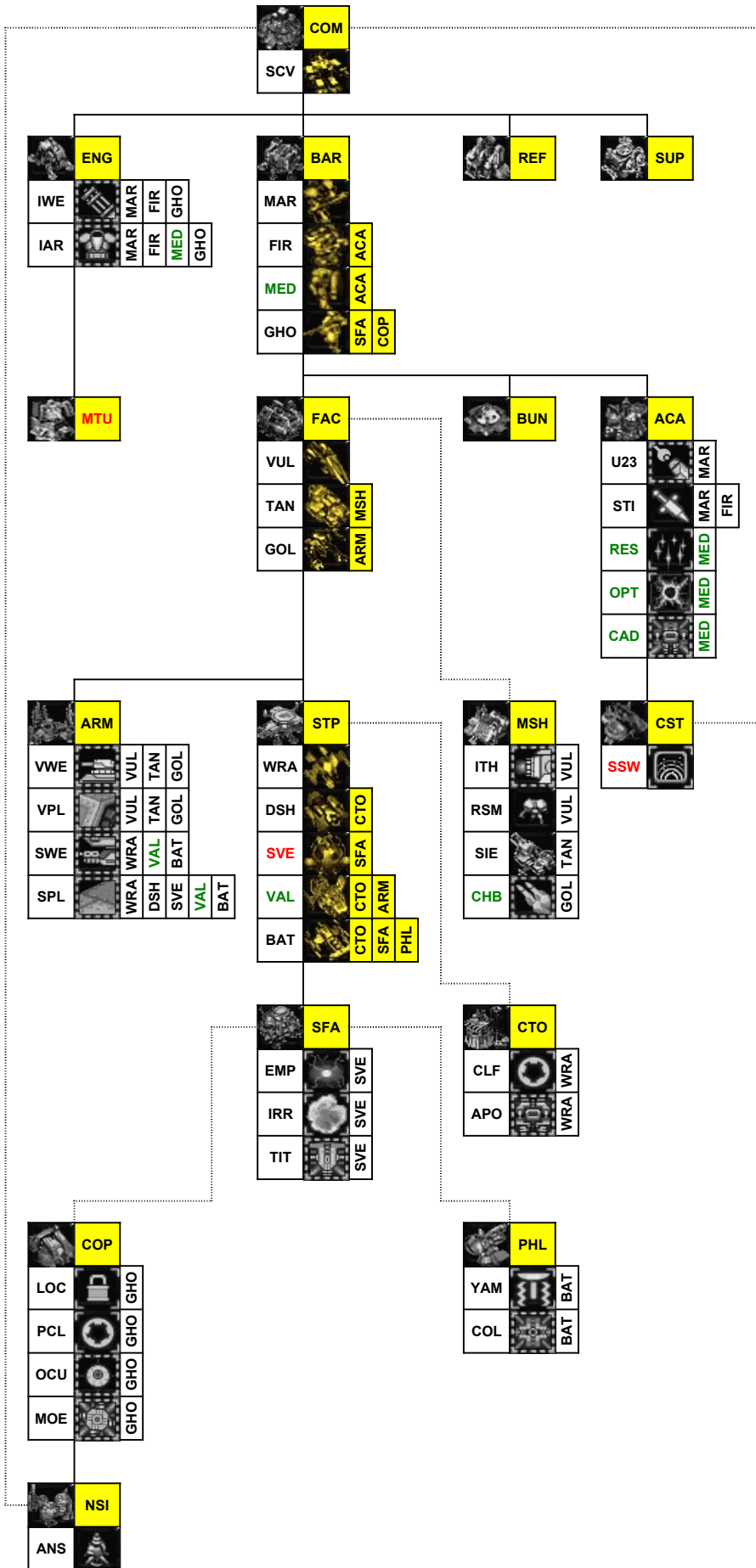
BAT	battlecruiser
DSH	dropship
FIR	firebat
GHO	ghost
GOL	goliath
MAR	marine
MED	medic
SCV	SCV
SVE	science vessel
TAN	siege tank
VAL	valkyrie
VUL	vulture
WRA	wraith

ACTIONS & RESEARCH

ANS	arm nuclear silo
APO	apollo reactor
CAD	caduceus reactor
CHB	charon boosters
CLF	cloaking field
COL	colossus reactor
EMP	EMP shockwave
IAR	infantry armor
IRR	irradiate
ITH	ion thrusters
IWE	infantry weapons
LOC	lockdown
MOE	moebius reactor
OCU	ocular implants
OPT	optical flare
PCL	personal cloaking
RES	restoration
RSM	spider mines
SIE	siege tech
SPL	ship plating
SSW	scanner sweep
STI	stimpack tech
SWE	ship weapons
TIT	titan reactor
U23	U-238 shells
VPL	vehicle plating
VWE	vehicle weapons
YAM	yamato gun

MISC

—	allows next building
.....	module
XXX	hidden enemy detector
XXX	only in Brood War



ZERG TECH TREE

KEY

BUILDINGS

CRE	creep colony
DMO	defiler mound
EVO	evolution chamber
EXT	extractor
GRE	greater spire
HAT	hatchery
HDE	hydralisk den
HIV	hive
ICC	infested command center
LAI	lair
NYD	nydus canal
QNE	queen's nest
SPA	spawnling pool
SPI	spire
SPO	spore colony
SUN	sunken colony
UCA	ultralisk cavern

UNITS

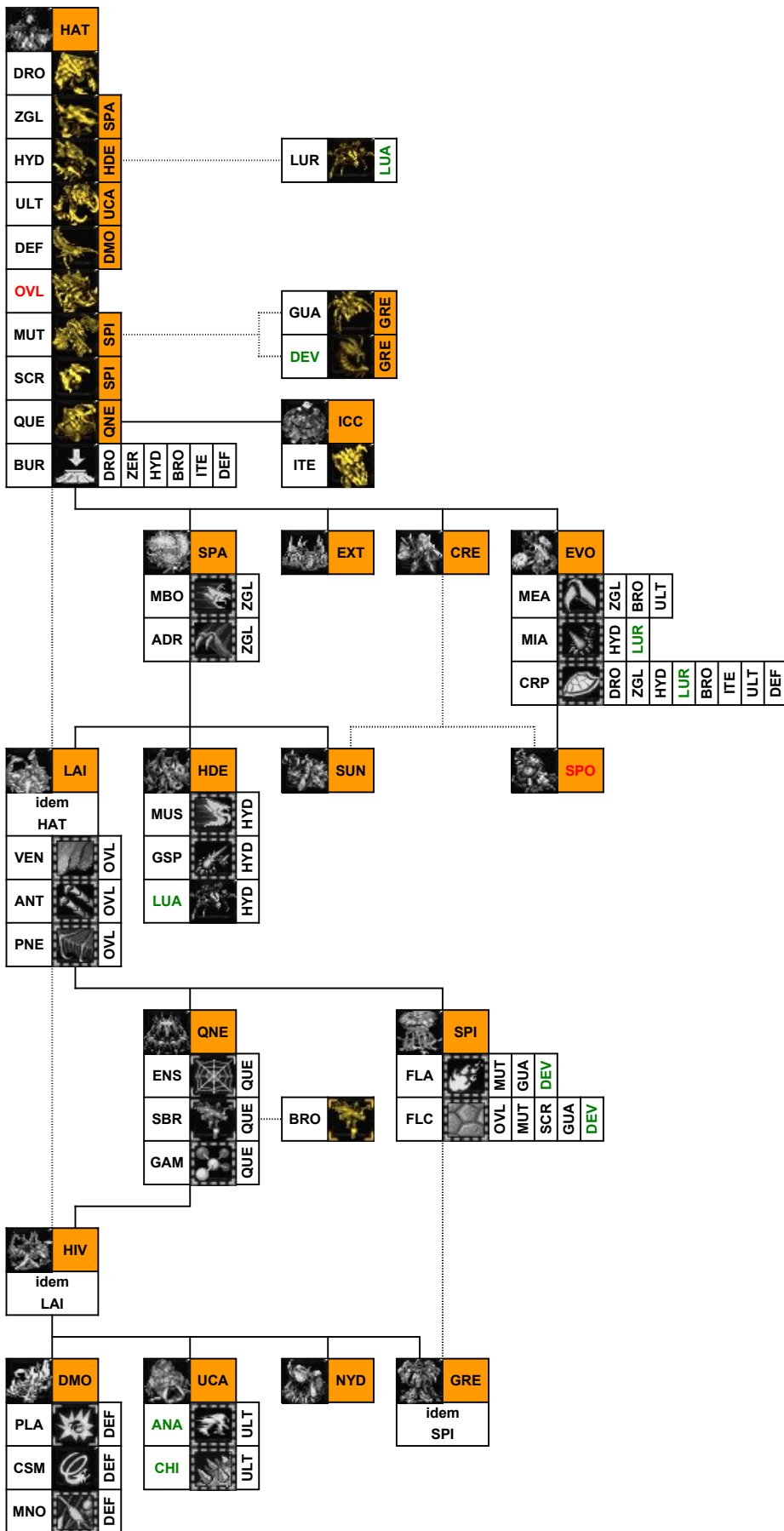
BRO	broodling
DEF	defiler
DEV	devourer
DRO	drone
GUA	guardian
HYD	hydralisk
ITE	infested terran
LUR	lurker
MUT	mutalisk
OVL	overlord
QUE	queen
SCR	scourge
ULT	ultralisk
ZGL	zergling

ACTIONS & RESEARCH

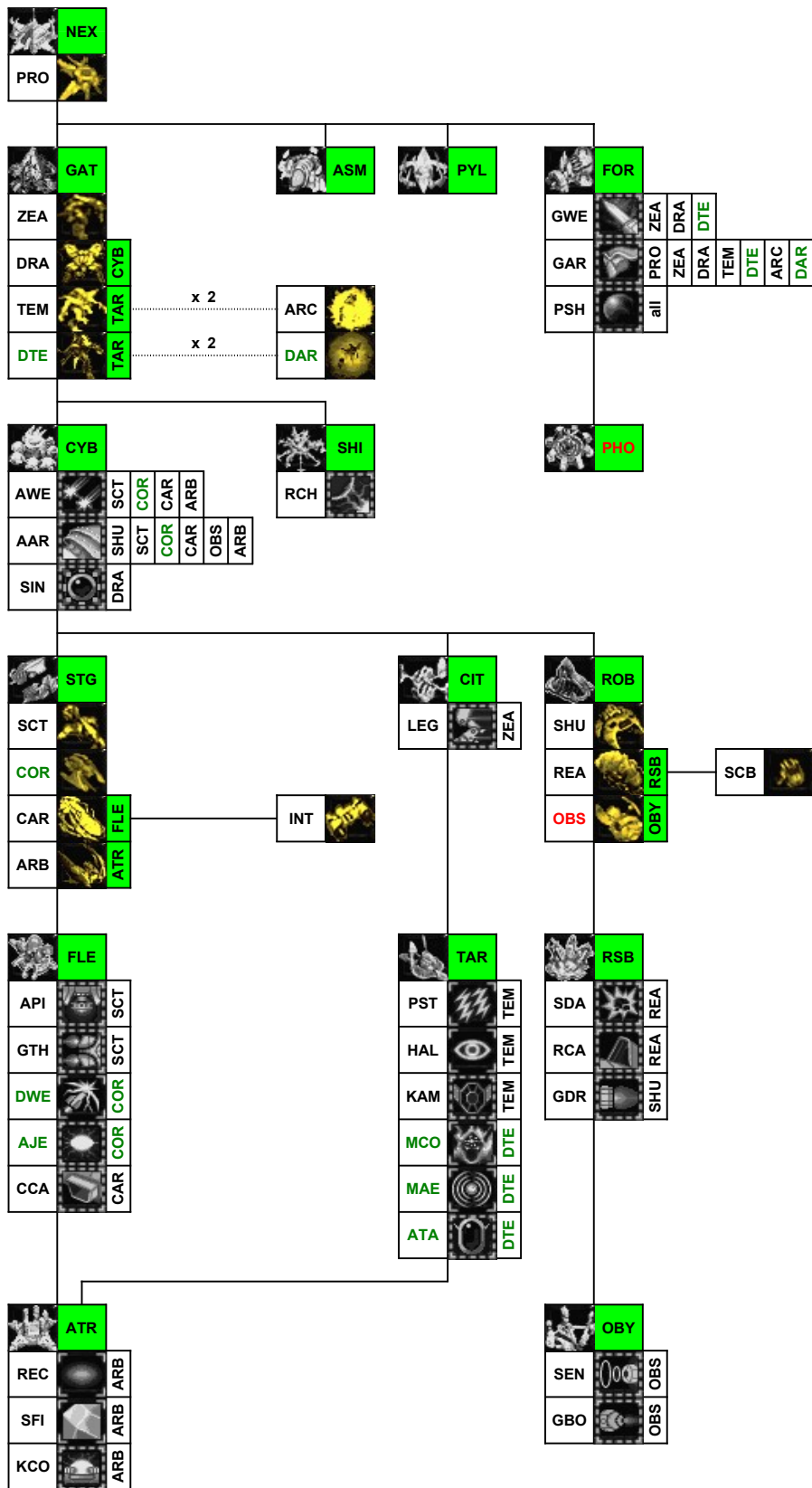
ADR	adrenal glands
ANA	anabolic synthesis
ANT	antennas
BUR	burrow
CRP	carapace
CSM	consume
CHI	chitinous armor
ENS	ensnare
FLA	flyer attacks
FLC	flyer carapace
GAM	gamete meiosis
GSP	grooved spines
LUA	lurker aspect
MBO	metabolic boost
MEA	melee attack
MIA	missile attack
MNO	metasynaptic node
MUS	muscular augments
PLA	plague
PNE	pneumatized carapace
SBR	spawn broodlings
VEN	ventral sacs

DIVERS

—	allows next building
.....	mutates into
XXX	enemy detector
XXX	only in Brood War



PROTOSS TECH TREE



KEY

BUILDINGS

ASM	assimilator
ATR	arbiter tribunal
CIT	citadel of Adun
CYB	cybernetic core
FLE	fleet beacon
FOR	forge
GAT	gateway
NEX	nexus
OBY	observatory
PHO	photon cannon
PYL	pylon
ROB	robotic facility
RSB	robotic support bay
SHI	shield battery
STG	stargate
TAR	templar archives

UNITS

ARB	arbiter
ARC	archon
CAR	carrier
COR	corsair
DAR	dark archon
DRA	dragoon
DTE	dark templar
INT	interceptor
OBS	observer
PRO	probe
REA	reaver
SCB	scarab
SCT	scout
SHU	shuttle
TEM	templar
ZEA	zealot

ACTIONS & RESEARCH

AAR	air armor
AJE	argus jewel
API	apial sensors
ATA	argus talisman
AWE	air weapons
CCA	carrier capacity
DWE	disruption web
GAR	ground armor
GBO	gravitic boosters
GDR	gravitic drive
GTH	gravitic thrusters
GWE	ground weapons
HAL	hallucinate
KAM	khaydarin amulet
KCO	khaydarin core
LEG	leg enhancements
MAE	maelstrom
MCO	mind control
PSH	plasma shields
PST	psionic storm
RCA	reaver capacity
RCH	recharge shields
REC	recall
SDA	scarab damage
SEN	sensor array
SFI	stasis field
SIN	singularity charge

MISC

—	allows next building
.....	mutates into
XXXX	enemy detector
XXX	only in Brood War